

# The G4KLX ircDDB Gateway and Repeater Programs

Presented at  
Ham Radio 2012

# Who am I?

- Licenced as G8TXQ in 1979, G4KLX in 1980
- HB9DRD between 2000 and 2003
- Started with AX.25 in 1987
- Wrote Linux kernel AX.25, NET/ROM and ROSE protocols (as well as X.25 and LAPB)
- Professional software engineer
- Currently studying HF propagation for my PhD



# Development History - 1

- Wanted to put some amateur radio into D-Star
- Sound card based client by mid-2009
- Sound card based repeater a month later
- First operational repeater in August 2009 (GB3IN)

# Development History - 2

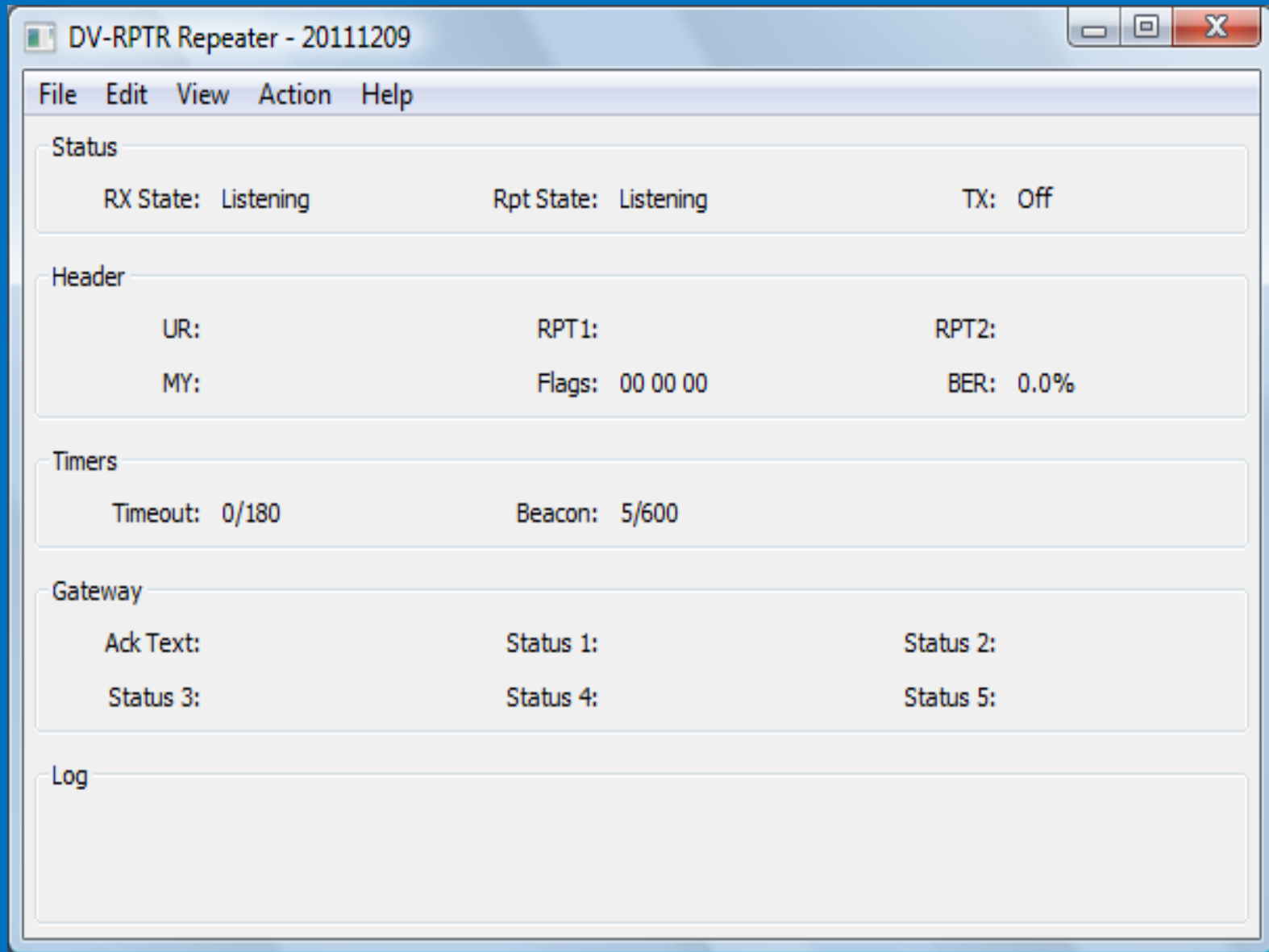
- Integration with Open G2 in late 2009
- GMSK Repeater and ircDDB Gateway in late 2010
- DVAP Node and DV-RPTR Repeater in Summer 2011
- Split Repeater in early 2012

# Common Repeater Features - 1

- Multiple modes (simplex, duplex, etc)
- AMBE reconstruction
- DTMF blanking
- Callsign validity checking

# Common Repeater Features - 2

- Hidden remote commands
- Intelligent acks
- Voice beacon
- Multiple OS and CPU compatible
- And more.....







# ircDDB Gateway

- First approached in Summer 2010 by Jann DG8NGN
- An open and better system than Icom G2
- Chance to create unified open source gateway
- First release in October 2010

# ircDDB Gateway Features - 1

- Uses ircDDB for user and repeater queries
- Includes D-Plus, DExtra, and DCS protocols
- Uses [opendstar.org](http://opendstar.org) for D-Plus validation
- Uses DCS callsign server for DExtra and DCS

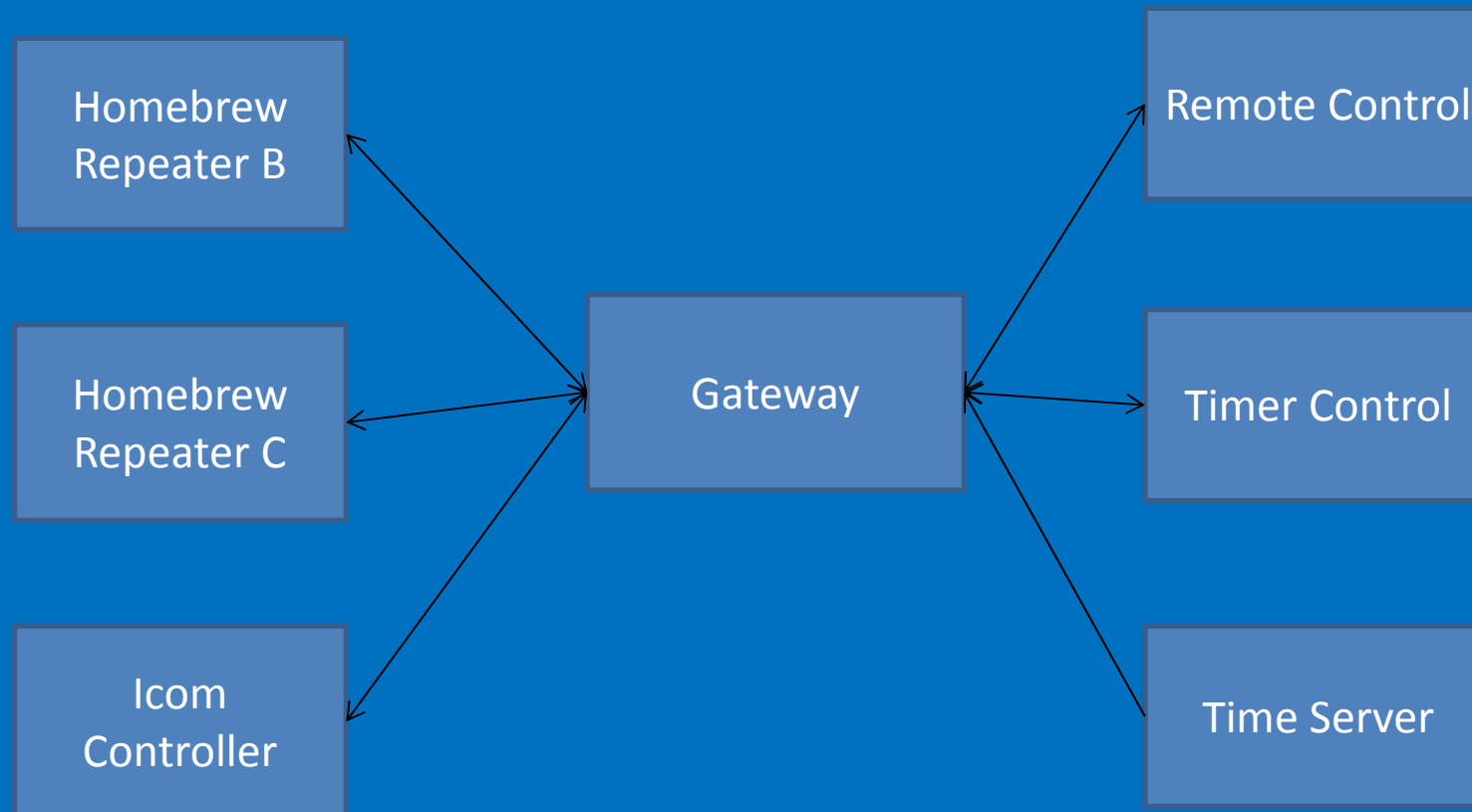
# ircDDB Gateway Features - 2

- Gates repeater, GPS, and GPS-A data to aprs.fi
- Allows DTMF link and unlink commands
- Voice status messages
- D-RATS integration

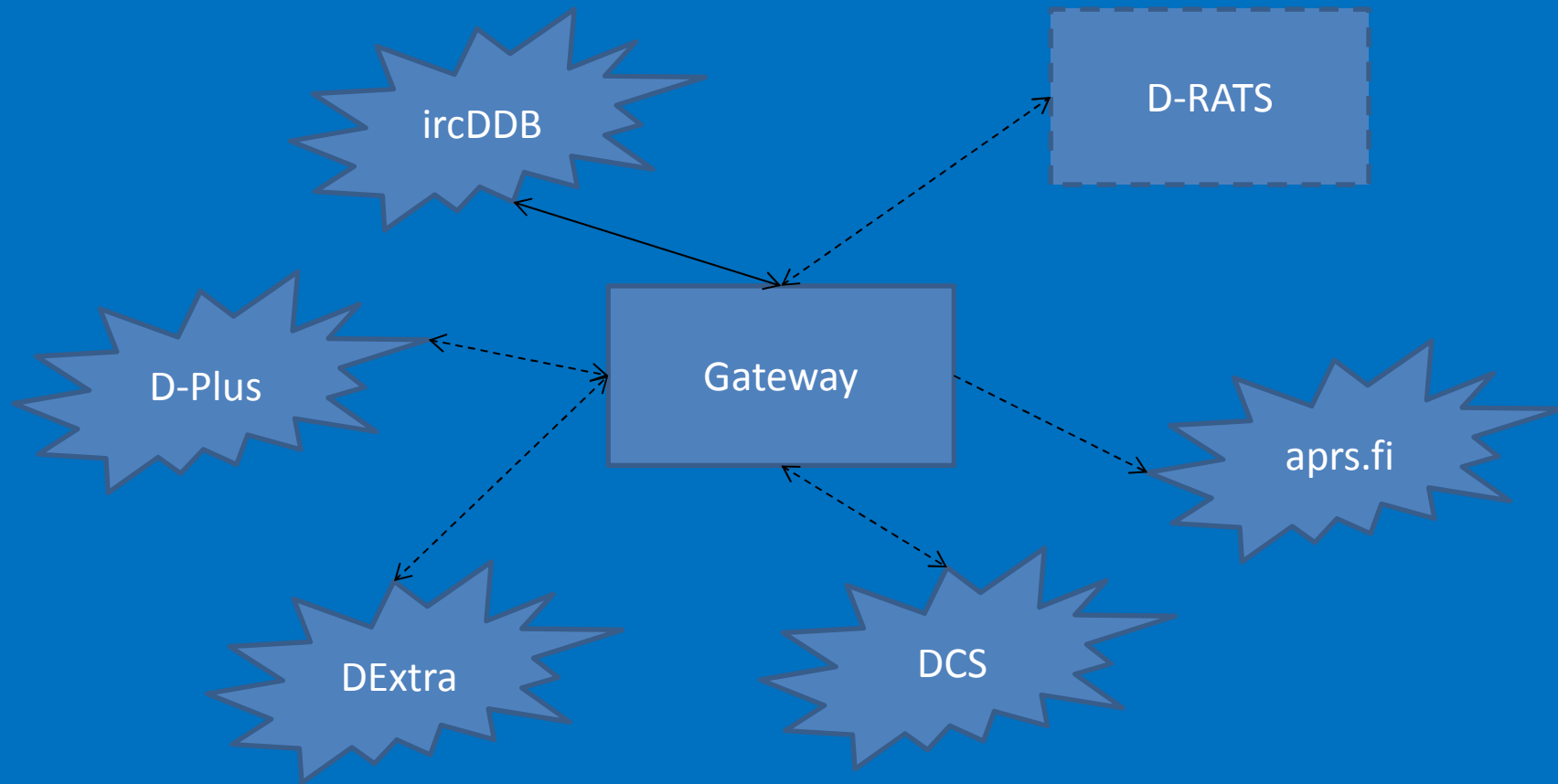
# ircDDB Gateway Features - 3

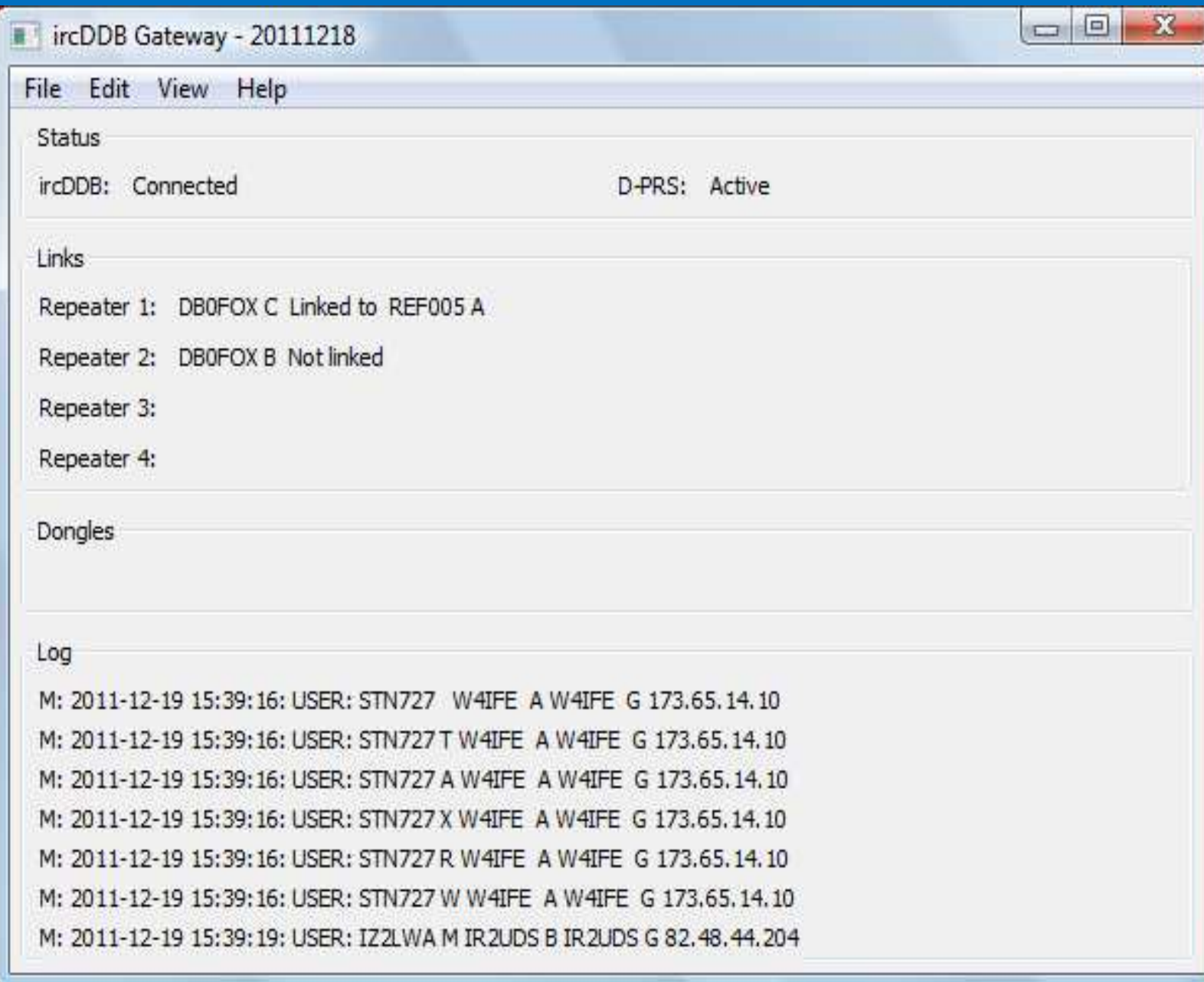
- Allows mix of homebrew and Icom controllers
- Can be used for DD mode
- Includes a STARnet Digital server
- Multiple OS and CPU compatibility
- And more.....

# ircDDB Gateway Connections - 1



# ircDDB Gateway Connections - 2





File Edit View Help

Status

ircDDB: Connected

D-PRS: Active

Links

Repeater 1: DB0FOX C Linked to REF005 A

Repeater 2: DB0FOX B Not linked

Repeater 3:

Repeater 4:

Dongles

Log

M: 2011-12-19 15:39:16: USER: STN727 W4IFE A W4IFE G 173.65.14.10  
M: 2011-12-19 15:39:16: USER: STN727 T W4IFE A W4IFE G 173.65.14.10  
M: 2011-12-19 15:39:16: USER: STN727 A W4IFE A W4IFE G 173.65.14.10  
M: 2011-12-19 15:39:16: USER: STN727 X W4IFE A W4IFE G 173.65.14.10  
M: 2011-12-19 15:39:16: USER: STN727 R W4IFE A W4IFE G 173.65.14.10  
M: 2011-12-19 15:39:16: USER: STN727 W W4IFE A W4IFE G 173.65.14.10  
M: 2011-12-19 15:39:19: USER: IZ2LWA M IR2UDS B IR2UDS G 82.48.44.204



The screenshot shows a Windows XP desktop environment with several software windows open, primarily related to ham radio operations. The desktop background is blue with various icons on the left and right sides.

**Windows and their content:**

- Remote Control - GB3WB - 20120423**: A window with a menu bar (File, Edit, Help) and a table listing call signs and protocols.
- Remote Control - GB3WE - 20120423**: Similar to the GB3WB window.
- Remote Control - GB7WB - 20120423**: Similar to the GB3WB window.
- ircDDB Gateway - GB7WB - 20120423**: Shows status (ircDDB: Connected), links, repeaters, and a log of messages.
- ircDDB Gateway - GB3WB - 20120423**: Similar to the GB7WB gateway window.
- ircDDB Gateway - GB3WE - 20120423**: Shows status (ircDDB: Connected), links, repeaters, and a log of messages.
- DV-RPTR Repeater - GB7WB - 20120420a**: Shows status (RX State: Listening, Rpt State: Listening) and various settings.
- Split Repeater - GB7WB - 20120420a**: Shows status (State: Network), header information (UR: CQCQCQ, RPT1: GB7WB G, MY: G7EBY /NEIL, Flags: 00 00 00), and timers (Timeout: 0/300, Beacon: 0/300).
- D-Star Repeater - GB3WB - 20120420a**: Shows status (Listening) and TX: Off.
- DV-RPTR Repeater - GB3WE - 20120420a**: Shows status (RX State: Listening, Rpt State: Listening, TX: Off) and header information.

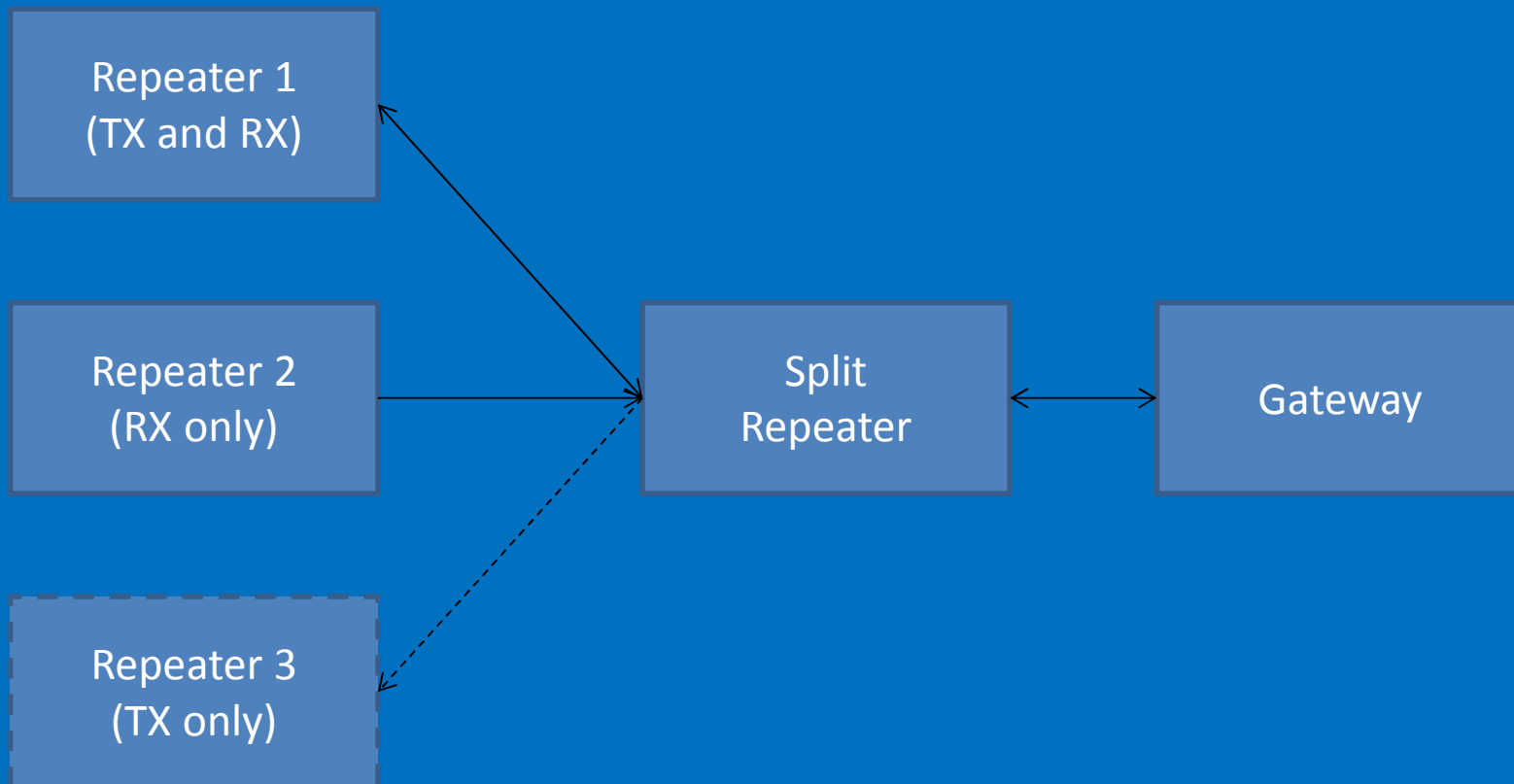
**Taskbar and Desktop:**

- Taskbar:** Contains the Start button, several application icons (ircDDB\_UDP\_Re..., ircDDB Gateway..., DV-RPTR Repe..., Analogue Repe...), and system tray icons (volume, network, clock showing 17:46 Monday 23/04/2012).
- Desktop Icons:** Includes 'split-repeat...', 'Qcheck', 'Quick Screen Capture', and four 'Remote Control' icons for GB3WB, GB3WE, GB7WB, and GB7WE.

# The Split Repeater

- Allow for more than one receiver and/or transmitter
- Diversity reception using the BER as the basis for receiver choice
- Has all of the features of the standard repeaters

# Split Repeater Configuration



# Future Developments

- Add DCS Link to the STARnet Digital server
- Upgrade the Time Server for more announcements and languages
- Any more ideas?

The End

Thank you for listening.